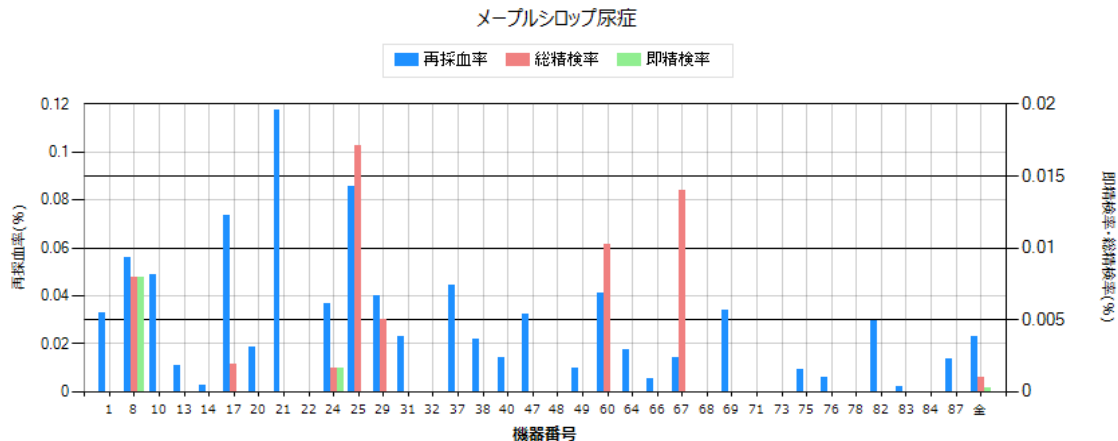
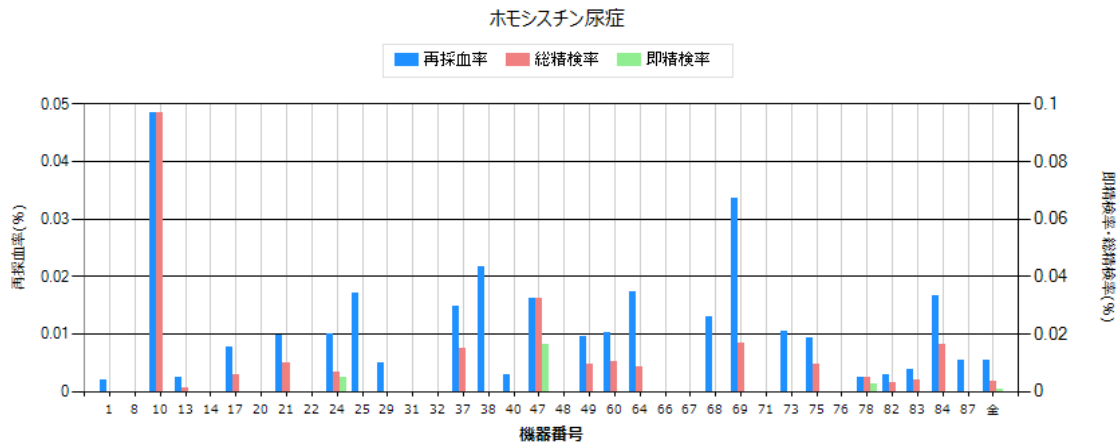


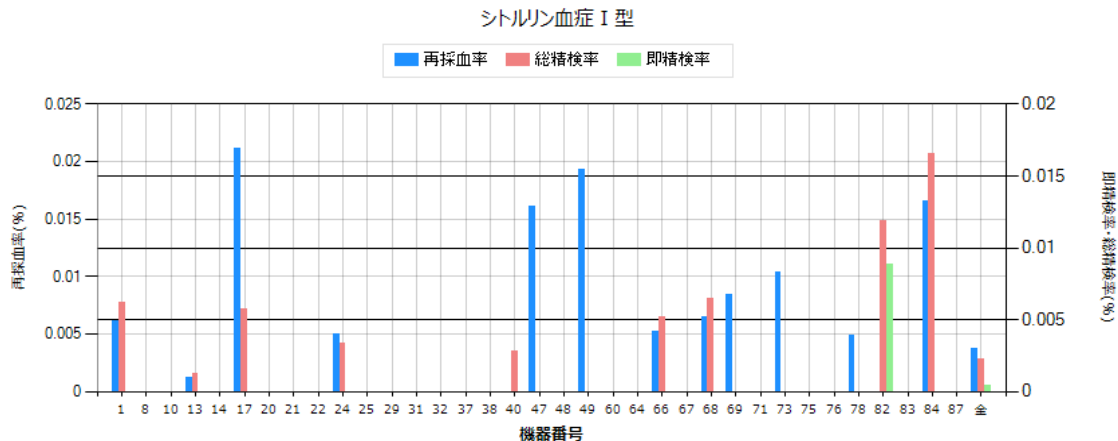
機器No.□	検体数□	再採血数	即精検数	再採血後 精検数	総精検数	発見患者数	再採血率	即精検率	再採血後 精検率	総精検率	発見頻度	陽性適中率 (PPV)
1	48,654	9	1	1	2	2	0.01849	0.00205	0.00205	0.00411	1:24327	100
8	12,546	2	1	0	1	-	0.01594	0.00797	-	0.00797	-	-
10	2,058	0	0	0	0	0	-	-	-	-	-	-
13	82,116	0	0	0	0	-	-	-	-	-	-	-
14	35,828	4	0	1	1	1	0.01116	-	0.00279	0.00279	1:35828	100
17	51,868	1	1	0	1	-	0.00192	0.00192	-	0.00192	-	-
20	10,820	4	0	1	1	0	0.03696	-	0.00924	0.00924	-	0
21	10,195	1	0	0	0	-	0.0098	-	-	-	-	-
22	5,603	1	0	0	0	-	0.01784	-	-	-	-	-
24	60,207	38	3	15	18	-	0.06311	0.00498	0.02491	0.02989	-	-
25	5,852	5	0	0	0	-	0.08544	-	-	-	-	-
29	19,981	4	0	1	1	0	0.02001	-	0.005	0.005	-	0
31	22,048	7	0	4	4	3	0.03174	-	0.01814	0.01814	1:7349	75
32	3,942	0	0	0	0	0	-	-	-	-	-	-
37	6,738	2	0	1	1	0	0.02968	-	0.01484	0.01484	-	0
38	4,606	1	0	0	0	-	0.02171	-	-	-	-	-
40	35,309	1	1	1	2	1	0.00283	0.00283	0.00283	0.00566	1:35309	50
47	6,188	2	1	0	1	-	0.03232	0.01616	-	0.01616	-	-
48	8,017	2	1	1	2	2	0.02494	0.01247	0.01247	0.02494	1:4009	100
49	10,372	3	0	0	0	-	0.02892	-	-	-	-	-
60	9,792	1	0	0	0	0	0.01021	-	-	-	-	-
64	11,599	0	0	0	0	0	-	-	-	-	-	-
66	19,259	2	0	1	1	1	0.01038	-	0.00519	0.00519	1:19259	100
67	7,160	1	0	0	0	-	0.01396	-	-	-	-	-
68	15,492	2	0	1	1	0	0.0129	-	0.00645	0.00645	-	0
69	11,868	3	0	1	1	1	0.02527	-	0.00842	0.00842	1:11868	100
71	12,820	0	0	0	0	-	-	-	-	-	-	-
73	9,643	2	0	1	1	0	0.02074	-	0.01037	0.01037	-	0
75	10,670	1	0	0	0	0	0.00937	-	-	-	-	-
76	16,906	3	0	0	0	0	0.01774	-	-	-	-	-
78	41,336	6	1	2	3	3	0.01451	0.00241	0.00483	0.00725	1:13779	100
82	33,748	4	0	0	0	0	0.01185	-	-	-	-	-
83	51,154	15	1	3	4	0	0.02932	0.00195	0.00586	0.00781	-	0
84	6,046	1	0	0	0	0	0.01653	-	-	-	-	-
87	37,153	3	1	1	2	0	0.00807	0.00269	0.00269	0.00538	-	0
全体	737,594	131	12	36	48	14	0.01776	0.00162	0.00488	0.0065	1:52685	29.17
						max	0.08544	0.01616	0.02491	0.02989		100
						min	0.00192	0.00192	0.00205	0.00192		0



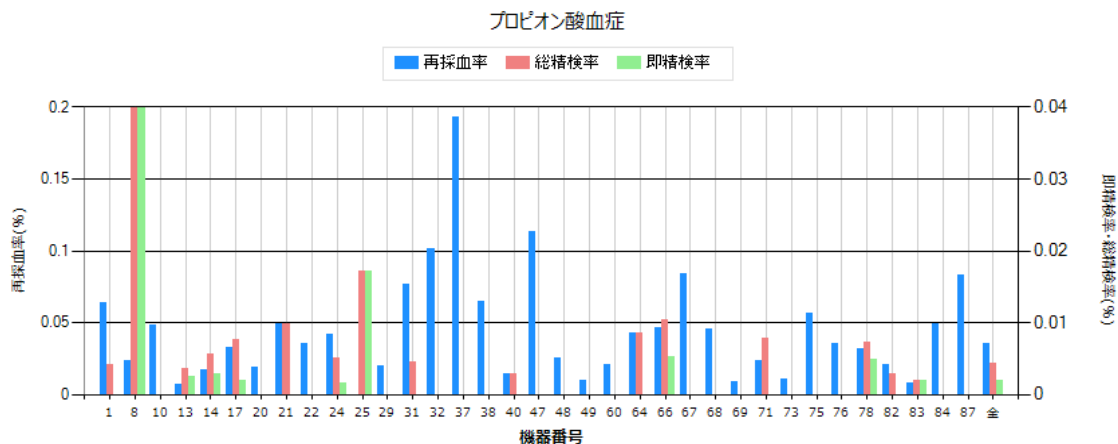
機器No.□	検体数□	再採血数	即精検数	再採血後 精検数	総精検数	発見患者数	再採血率	即精検率	再採血後 精検率	総精検率	発見頻度	陽性適中率 (PPV)
1	48,654	16	0	0	0	0	0.03288	-	-	-	-	-
8	12,546	7	1	0	1	-	0.05579	0.00797	-	0.00797	-	-
10	2,058	1	0	0	0	0	0.04859	-	-	-	-	-
13	82,116	9	0	0	0	-	0.01096	-	-	-	-	-
14	35,828	1	0	0	0	-	0.00279	-	-	-	-	-
17	51,868	38	0	1	1	-	0.07326	-	0.00192	0.00192	-	-
20	10,820	2	0	0	0	0	0.01848	-	-	-	-	-
21	10,195	12	0	0	0	-	0.1177	-	-	-	-	-
22	5,603	0	0	0	0	-	-	-	-	-	-	-
24	60,207	22	1	0	1	-	0.03654	0.00166	-	0.00166	-	-
25	5,852	5	0	1	1	-	0.08544	-	0.01708	0.01708	-	-
29	19,981	8	0	1	1	0	0.04003	-	0.005	0.005	-	0
31	22,048	5	0	0	0	-	0.02267	-	-	-	-	-
32	3,942	0	0	0	0	0	-	-	-	-	-	-
37	6,738	3	0	0	0	0	0.04452	-	-	-	-	-
38	4,606	1	0	0	0	-	0.02171	-	-	-	-	-
40	35,309	5	0	0	0	-	0.01416	-	-	-	-	-
47	6,188	2	0	0	0	-	0.03232	-	-	-	-	-
48	8,017	0	0	0	0	-	-	-	-	-	-	-
49	10,372	1	0	0	0	-	0.00964	-	-	-	-	-
60	9,792	4	0	1	1	0	0.04084	-	0.01021	0.01021	-	0
64	11,599	2	0	0	0	0	0.01724	-	-	-	-	-
66	19,259	1	0	0	0	0	0.00519	-	-	-	-	-
67	7,160	1	0	1	1	-	0.01396	-	0.01396	0.01396	-	-
68	15,492	0	0	0	0	0	-	-	-	-	-	-
69	11,868	4	0	0	0	0	0.0337	-	-	-	-	-
71	12,820	0	0	0	0	-	-	-	-	-	-	-
73	9,643	0	0	0	0	-	-	-	-	-	-	-
75	10,670	1	0	0	0	0	0.00937	-	-	-	-	-
76	16,906	1	0	0	0	0	0.00591	-	-	-	-	-
78	41,336	0	0	0	0	-	-	-	-	-	-	-
82	33,748	10	0	0	0	0	0.02963	-	-	-	-	-
83	51,154	1	0	0	0	0	0.00195	-	-	-	-	-
84	6,046	0	0	0	0	0	-	-	-	-	-	-
87	37,153	5	0	0	0	0	0.01345	-	-	-	-	-
全体	737,594	168	2	5	7	0	0.02277	0.00027	0.00067	0.00094	-	0
						max	0.1177	0.00797	0.01708	0.01708		0
						min	0.00195	0.00166	0.00192	0.00166		0



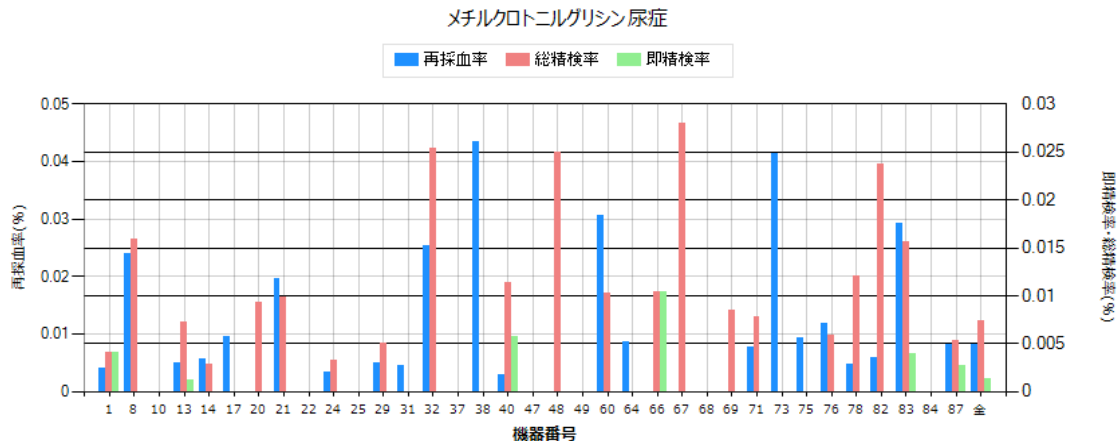
機器No.口	検体数口	再採血数	即精検数	再採血後 精検数	総精検数	発見患者数	再採血率	即精検率	再採血後 精検率	総精検率	発見頻度	陽性適中率 (PPV)
1	48,654	1	0	0	0	0	0.00205	-	-	-	-	-
8	12,546	0	0	0	0	0	-	-	-	-	-	-
10	2,058	1	0	2	2	0	0.04859	-	0.09718	0.09718	-	0
13	82,116	2	0	1	1	-	0.00243	-	0.00121	0.00121	-	-
14	35,828	0	0	0	0	-	-	-	-	-	-	-
17	51,868	4	0	3	3	-	0.00771	-	0.00578	0.00578	-	-
20	10,820	0	0	0	0	0	-	-	-	-	-	-
21	10,195	1	0	1	1	-	0.0098	-	0.0098	0.0098	-	-
22	5,603	0	0	0	0	-	-	-	-	-	-	-
24	60,207	6	3	1	4	-	0.00996	0.00498	0.00166	0.00664	-	-
25	5,852	1	0	0	0	-	0.01708	-	-	-	-	-
29	19,981	1	0	0	0	0	0.005	-	-	-	-	-
31	22,048	0	0	0	0	-	-	-	-	-	-	-
32	3,942	0	0	0	0	0	-	-	-	-	-	-
37	6,738	1	0	1	1	0	0.01484	-	0.01484	0.01484	-	0
38	4,606	1	0	0	0	-	0.02171	-	-	-	-	-
40	35,309	1	0	0	0	-	0.00283	-	-	-	-	-
47	6,188	1	1	1	2	-	0.01616	0.01616	0.01616	0.03232	-	-
48	8,017	0	0	0	0	-	-	-	-	-	-	-
49	10,372	1	0	1	1	-	0.00964	-	0.00964	0.00964	-	-
60	9,792	1	0	1	1	0	0.01021	-	0.01021	0.01021	-	0
64	11,599	2	0	1	1	1	0.01724	-	0.00862	0.00862	1:11599	100
66	19,259	0	0	0	0	0	-	-	-	-	-	-
67	7,160	0	0	0	0	-	-	-	-	-	-	-
68	15,492	2	0	0	0	0	0.0129	-	-	-	-	-
69	11,868	4	0	2	2	0	0.0337	-	0.01685	0.01685	-	0
71	12,820	0	0	0	0	-	-	-	-	-	-	-
73	9,643	1	0	0	0	-	0.01037	-	-	-	-	-
75	10,670	1	0	1	1	0	0.00937	-	0.00937	0.00937	-	0
76	16,906	0	0	0	0	0	-	-	-	-	-	-
78	41,336	1	1	1	2	-	0.00241	0.00241	0.00241	0.00483	-	-
82	33,748	1	0	1	1	0	0.00296	-	0.00296	0.00296	-	0
83	51,154	2	0	2	2	0	0.0039	-	0.0039	0.0039	-	0
84	6,046	1	0	1	1	0	0.01653	-	0.01653	0.01653	-	0
87	37,153	2	0	0	0	0	0.00538	-	-	-	-	-
全体	737,594	40	5	21	26	1	0.00542	0.00067	0.00284	0.00352	1:737594	3.85
						max	0.04859	0.01616	0.09718	0.09718		100
						min	0.00205	0.00241	0.00121	0.00121		0



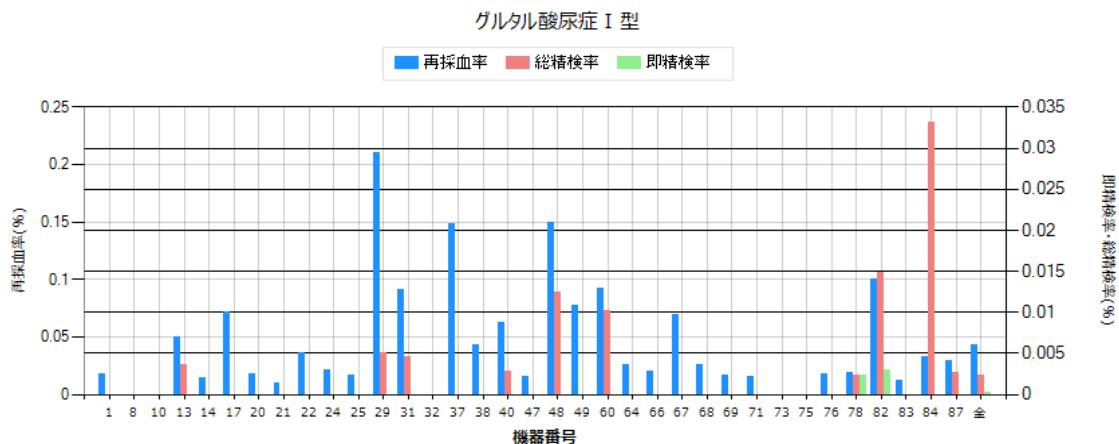
機器No.□	検体数□	再採血数	即精検数	再採血後 精検数	総精検数	発見患者数	再採血率	即精検率	再採血後 精検率	総精検率	発見頻度	陽性適中率 (PPV)
1	48,654	3	0	3	3	1	0.00616	-	0.00616	0.00616	1:48654	33.33
8	12,546	0	0	0	0	-	-	-	-	-	-	-
10	2,058	0	0	0	0	0	-	-	-	-	-	-
13	82,116	1	0	1	1	-	0.00121	-	0.00121	0.00121	-	-
14	35,828	0	0	0	0	-	-	-	-	-	-	-
17	51,868	11	0	3	3	-	0.0212	-	0.00578	0.00578	-	-
20	10,820	0	0	0	0	0	-	-	-	-	-	-
21	10,195	0	0	0	0	-	-	-	-	-	-	-
22	5,603	0	0	0	0	-	-	-	-	-	-	-
24	60,207	3	0	2	2	-	0.00498	-	0.00332	0.00332	-	-
25	5,852	0	0	0	0	-	-	-	-	-	-	-
29	19,981	0	0	0	0	0	-	-	-	-	-	-
31	22,048	0	0	0	0	-	-	-	-	-	-	-
32	3,942	0	0	0	0	0	-	-	-	-	-	-
37	6,738	0	0	0	0	0	-	-	-	-	-	-
38	4,606	0	0	0	0	-	-	-	-	-	-	-
40	35,309	0	0	1	1	-	-	0.00283	0.00283	-	-	-
47	6,188	1	0	0	0	-	0.01616	-	-	-	-	-
48	8,017	0	0	0	0	-	-	-	-	-	-	-
49	10,372	2	0	0	0	-	0.01928	-	-	-	-	-
60	9,792	0	0	0	0	0	-	-	-	-	-	-
64	11,599	0	0	0	0	0	-	-	-	-	-	-
66	19,259	1	0	1	1	0	0.00519	-	0.00519	0.00519	-	0
67	7,160	0	0	0	0	-	-	-	-	-	-	-
68	15,492	1	0	1	1	0	0.00645	-	0.00645	0.00645	-	0
69	11,868	1	0	0	0	0	0.00842	-	-	-	-	-
71	12,820	0	0	0	0	-	-	-	-	-	-	-
73	9,643	1	0	0	0	-	0.01037	-	-	-	-	-
75	10,670	0	0	0	0	0	-	-	-	-	-	-
76	16,906	0	0	0	0	0	-	-	-	-	-	-
78	41,336	2	0	0	0	-	0.00483	-	-	-	-	-
82	33,748	0	3	1	4	0	-	0.00888	0.00296	0.01185	-	0
83	51,154	0	0	0	0	0	-	-	-	-	-	-
84	6,046	1	0	1	1	0	0.01653	-	0.01653	0.01653	-	0
87	37,153	0	0	0	0	0	-	-	-	-	-	-
全体	737,594	28	3	14	17	1	0.00379	0.0004	0.00189	0.0023	1:737594	5.88
						max	0.0212	0.00888	0.01653	0.01653		33.33
						min	0.00121	0.00888	0.00121	0.00121		0



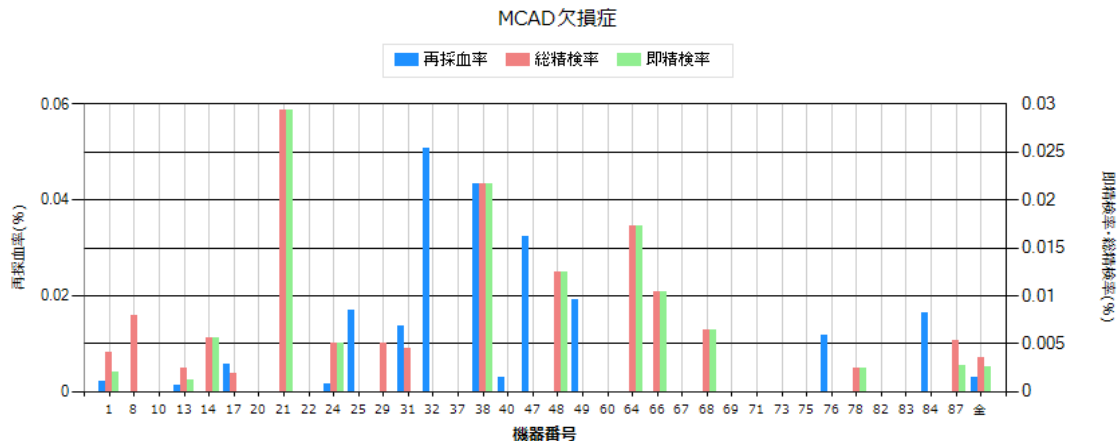
機器No.口	検体数口	再採血数	即精検数	再採血後 精検数	総精検数	発見患者数	再採血率	即精検率	再採血後 精検率	総精検率	発見頻度	陽性適中率 (PPV)
1	48,654	31	0	2	2	1	0.06371	-	0.00411	0.00411	1:48654	50
8	12,546	3	5	0	5	-	0.02391	0.03985	-	0.03985	-	-
10	2,058	1	0	0	0	0	0.04859	-	-	-	-	-
13	82,116	6	2	1	3	2	0.0073	0.00243	0.00121	0.00365	1:41058	66.67
14	35,828	6	1	1	2	1	0.01674	0.00279	0.00279	0.00558	1:35828	50
17	51,868	17	1	3	4	-	0.03277	0.00192	0.00578	0.00771	-	-
20	10,820	2	0	0	0	0	0.01848	-	-	-	-	-
21	10,195	5	0	1	1	-	0.04904	-	0.0098	0.0098	-	-
22	5,603	2	0	0	0	-	0.03569	-	-	-	-	-
24	60,207	25	1	2	3	-	0.04152	0.00166	0.00332	0.00498	-	-
25	5,852	0	1	0	1	1	-	0.01708	-	0.01708	1:5852	100
29	19,981	4	0	0	0	0	0.02001	-	-	-	-	-
31	22,048	17	0	1	1	1	0.0771	-	0.00453	0.00453	1:22048	100
32	3,942	4	0	0	0	0	0.10147	-	-	-	-	-
37	6,738	13	0	0	0	0	0.19293	-	-	-	-	-
38	4,606	3	0	0	0	-	0.06513	-	-	-	-	-
40	35,309	5	0	1	1	-	0.01416	-	0.00283	0.00283	-	-
47	6,188	7	0	0	0	-	0.11312	-	-	-	-	-
48	8,017	2	0	0	0	-	0.02494	-	-	-	-	-
49	10,372	1	0	0	0	-	0.00964	-	-	-	-	-
60	9,792	2	0	0	0	0	0.02042	-	-	-	-	-
64	11,599	5	0	1	1	1	0.0431	-	0.00862	0.00862	1:11599	100
66	19,259	9	1	1	2	0	0.04673	0.00519	0.00519	0.01038	-	0
67	7,160	6	0	0	0	-	0.08379	-	-	-	-	-
68	15,492	7	0	0	0	0	0.04518	-	-	-	-	-
69	11,868	1	0	0	0	0	0.00842	-	-	-	-	-
71	12,820	3	0	1	1	1	0.0234	-	0.0078	0.0078	1:12820	100
73	9,643	1	0	0	0	-	0.01037	-	-	-	-	-
75	10,670	6	0	0	0	0	0.05623	-	-	-	-	-
76	16,906	6	0	0	0	0	0.03549	-	-	-	-	-
78	41,336	13	2	1	3	-	0.03144	0.00483	0.00241	0.00725	-	-
82	33,748	7	0	1	1	0	0.02074	-	0.00296	0.00296	-	0
83	51,154	4	1	0	1	0	0.00781	0.00195	-	0.00195	-	0
84	6,046	3	0	0	0	0	0.04961	-	-	-	-	-
87	37,153	31	0	0	0	0	0.08343	-	-	-	-	-
全体	737,594	258	15	17	32	8	0.03497	0.00203	0.0023	0.00433	1:92199	25
						max	0.19293	0.03985	0.0098	0.03985		100
						min	0.0073	0.00166	0.00121	0.00195		0



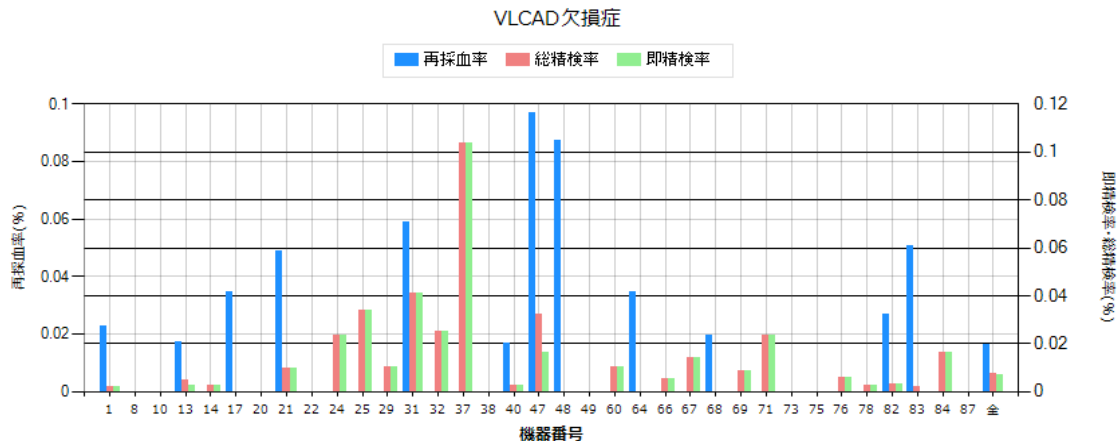
機器No.口	検体数口	再採血数	即精検数	再採血後精検数	総精検数	発見患者数	再採血率	即精検率	再採血後精検率	総精検率	発見頻度	陽性適中率 (PPV)
1	48,654	2	2	0	2	1	0.00411	0.00411	-	0.00411	1:48654	50
8	12,546	3	0	2	2	-	0.02391	-	0.01594	0.01594	-	-
10	2,058	0	0	0	0	0	-	-	-	-	-	-
13	82,116	4	1	5	6	-	0.00487	0.00121	0.00608	0.0073	-	-
14	35,828	2	0	1	1	-	0.00558	-	0.00279	0.00279	-	-
17	51,868	5	0	0	0	-	0.00963	-	-	-	-	-
20	10,820	0	0	1	1	0	-	-	0.00924	0.00924	-	0
21	10,195	2	0	1	1	-	0.01961	-	0.0098	0.0098	-	-
22	5,603	0	0	0	0	-	-	-	-	-	-	-
24	60,207	2	0	2	2	-	0.00332	-	0.00332	0.00332	-	-
25	5,852	0	0	0	0	-	-	-	-	-	-	-
29	19,981	1	0	1	1	0	0.005	-	0.005	0.005	-	0
31	22,048	1	0	0	0	-	0.00453	-	-	-	-	-
32	3,942	1	0	1	1	0	0.02536	-	0.02536	0.02536	-	0
37	6,738	0	0	0	0	0	-	-	-	-	-	-
38	4,606	2	0	0	0	-	0.04342	-	-	-	-	-
40	35,309	1	2	2	4	2	0.00283	0.00566	0.00566	0.01132	1:17655	50
47	6,188	0	0	0	0	0	-	-	-	-	-	-
48	8,017	0	0	2	2	-	-	-	0.02494	0.02494	-	-
49	10,372	0	0	0	0	-	-	-	-	-	-	-
60	9,792	3	0	1	1	0	0.03063	-	0.01021	0.01021	-	0
64	11,599	1	0	0	0	0	0.00862	-	-	-	-	-
66	19,259	0	2	0	2	0	-	0.01038	-	0.01038	-	0
67	7,160	0	0	2	2	-	-	-	0.02793	0.02793	-	-
68	15,492	0	0	0	0	0	-	-	-	-	-	-
69	11,868	0	0	1	1	0	-	-	0.00842	0.00842	-	0
71	12,820	1	0	1	1	-	0.0078	-	0.0078	0.0078	-	-
73	9,643	4	0	0	0	-	0.04148	-	-	-	-	-
75	10,670	1	0	0	0	0	0.00937	-	-	-	-	-
76	16,906	2	0	1	1	0	0.01183	-	0.00591	0.00591	-	0
78	41,336	2	0	5	5	-	0.00483	-	0.01209	0.01209	-	-
82	33,748	2	0	8	8	0	0.00592	-	0.0237	0.0237	-	0
83	51,154	15	2	6	8	1	0.02932	0.0039	0.01172	0.01563	1:51154	12.5
84	6,046	0	0	0	0	0	-	-	-	-	-	-
87	37,153	3	1	1	2	0	0.00807	0.00269	0.00269	0.00538	-	0
全体	737,594	60	10	44	54	4	0.00813	0.00135	0.00596	0.00732	1:184398	7.41
						max	0.04342	0.01038	0.02793	0.02793		50
						min	0.00283	0.00121	0.00269	0.00269		0



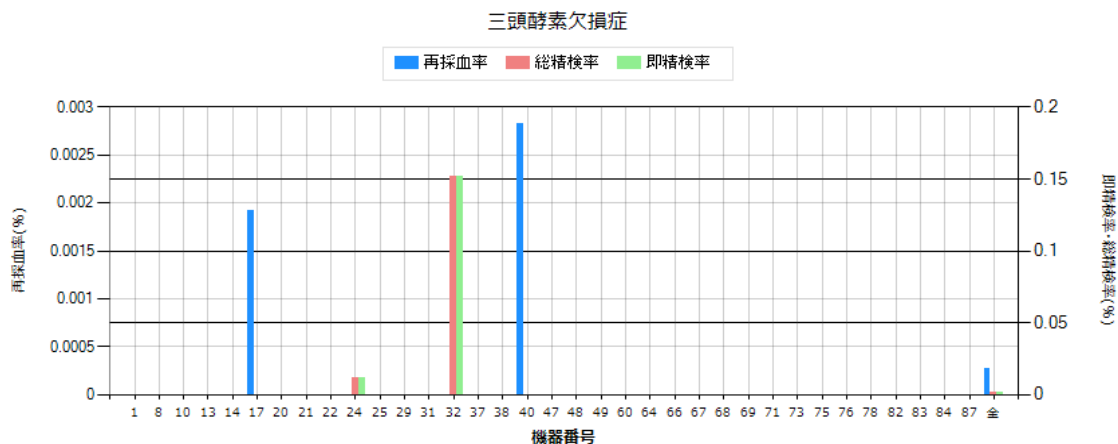
機器No.□	検体数□	再採血数	即精検数	再採血後 精検数	総精検数	発見患者数	再採血率	即精検率	再採血後 精検率	総精検率	発見頻度	陽性適中率 (PPV)
1	48,654	9	0	0	0	0	0.01849	-	-	-	-	-
8	12,546	0	0	0	0	-	-	-	-	-	-	-
10	2,058	0	0	0	0	0	-	-	-	-	-	-
13	82,116	41	0	3	3	-	0.04992	-	0.00365	0.00365	-	-
14	35,828	5	0	0	0	-	0.01395	-	-	-	-	-
17	51,868	37	0	0	0	-	0.07133	-	-	-	-	-
20	10,820	2	0	0	0	0	0.01848	-	-	-	-	-
21	10,195	1	0	0	0	-	0.0098	-	-	-	-	-
22	5,603	2	0	0	0	-	0.03569	-	-	-	-	-
24	60,207	13	0	0	0	-	0.02159	-	-	-	-	-
25	5,852	1	0	0	0	-	0.01708	-	-	-	-	-
29	19,981	42	0	1	1	0	0.21019	-	0.005	0.005	-	0
31	22,048	20	0	1	1	-	0.09071	-	0.00453	0.00453	-	-
32	3,942	0	0	0	0	0	-	-	-	-	-	-
37	6,738	10	0	0	0	0	0.14841	-	-	-	-	-
38	4,606	2	0	0	0	-	0.04342	-	-	-	-	-
40	35,309	22	0	1	1	1	0.0623	-	0.00283	0.00283	1:35309	100
47	6,188	1	0	0	0	-	0.01616	-	-	-	-	-
48	8,017	12	0	1	1	-	0.14968	-	0.01247	0.01247	-	-
49	10,372	8	0	0	0	-	0.07713	-	-	-	-	-
60	9,792	9	0	1	1	0	0.09191	-	0.01021	0.01021	-	0
64	11,599	3	0	0	0	0	0.02586	-	-	-	-	-
66	19,259	4	0	0	0	0	0.02076	-	-	-	-	-
67	7,160	5	0	0	0	-	0.06983	-	-	-	-	-
68	15,492	4	0	0	0	0	0.02581	-	-	-	-	-
69	11,868	2	0	0	0	0	0.01685	-	-	-	-	-
71	12,820	2	0	0	0	-	0.0156	-	-	-	-	-
73	9,643	0	0	0	0	-	-	-	-	-	-	-
75	10,670	0	0	0	0	0	-	-	-	-	-	-
76	16,906	3	0	0	0	0	0.01774	-	-	-	-	-
78	41,336	8	1	0	1	-	0.01935	0.00241	-	0.00241	-	-
82	33,748	34	1	4	5	0	0.10074	0.00296	0.01185	0.01481	-	0
83	51,154	6	0	0	0	0	0.01172	-	-	-	-	-
84	6,046	2	0	2	2	1	0.03307	-	0.03307	0.03307	1:6046	50
87	37,153	11	0	1	1	0	0.0296	-	0.00269	0.00269	-	0
全体	737,594	321	2	15	17	2	0.04351	0.00027	0.00203	0.0023	1:368797	11.76
						max	0.21019	0.00296	0.03307	0.03307		100
						min	0.0098	0.00241	0.00269	0.00241		0



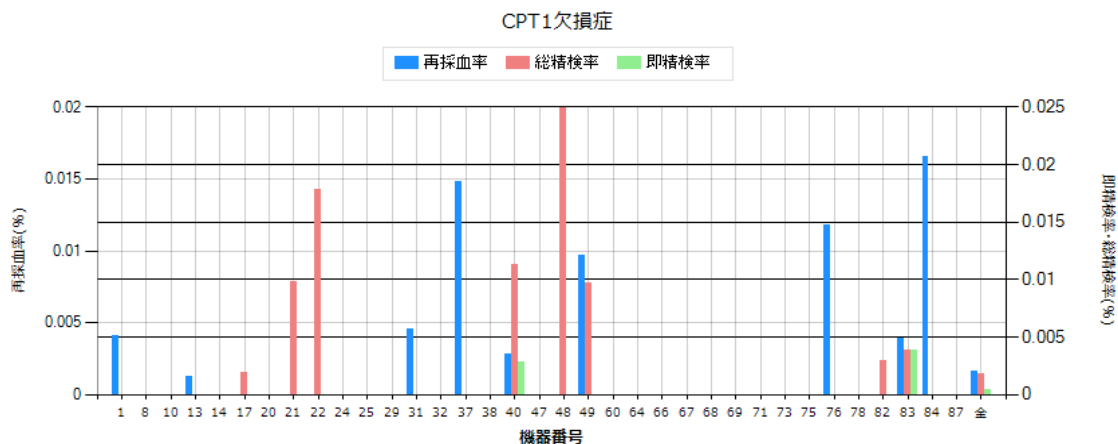
機器No.□	検体数□	再採血数	即精検数	再採血後 精検数	総精検数	発見患者数	再採血率	即精検率	再採血後 精検率	総精検率	発見頻度	陽性適中率 (PPV)
1	48,654	1	1	1	2	2	0.00205	0.00205	0.00205	0.00411	1:24327	100
8	12,546	0	0	1	1	-	-	-	0.00797	0.00797	-	-
10	2,058	0	0	0	0	0	-	-	-	-	-	-
13	82,116	1	1	1	2	1	0.00121	0.00121	0.00121	0.00243	1:82116	50
14	35,828	0	2	0	2	-	-	0.00558	-	0.00558	-	-
17	51,868	3	0	1	1	-	0.00578	-	0.00192	0.00192	-	-
20	10,820	0	0	0	0	0	-	-	-	-	-	-
21	10,195	0	3	0	3	-	-	0.02942	-	0.02942	-	-
22	5,603	0	0	0	0	-	-	-	-	-	-	-
24	60,207	1	3	0	3	-	0.00166	0.00498	-	0.00498	-	-
25	5,852	1	0	0	0	-	0.01708	-	-	-	-	-
29	19,981	0	0	1	1	0	-	-	0.005	0.005	-	0
31	22,048	3	0	1	1	-	0.0136	-	0.00453	0.00453	-	-
32	3,942	2	0	0	0	0	0.05073	-	-	-	-	-
37	6,738	0	0	0	0	0	-	-	-	-	-	-
38	4,606	2	1	0	1	1	0.04342	0.02171	-	0.02171	1:4606	100
40	35,309	1	0	0	0	-	0.00283	-	-	-	-	-
47	6,188	2	0	0	0	-	0.03232	-	-	-	-	-
48	8,017	0	1	0	1	-	-	0.01247	-	0.01247	-	-
49	10,372	2	0	0	0	-	0.01928	-	-	-	-	-
60	9,792	0	0	0	0	0	-	-	-	-	-	-
64	11,599	0	2	0	2	1	-	0.01724	-	0.01724	1:11599	50
66	19,259	0	2	0	2	0	-	0.01038	-	0.01038	-	0
67	7,160	0	0	0	0	-	-	-	-	-	-	-
68	15,492	0	1	0	1	1	-	0.00645	-	0.00645	1:15492	100
69	11,868	0	0	0	0	0	-	-	-	-	-	-
71	12,820	0	0	0	0	-	-	-	-	-	-	-
73	9,643	0	0	0	0	-	-	-	-	-	-	-
75	10,670	0	0	0	0	0	-	-	-	-	-	-
76	16,906	2	0	0	0	0	0.01183	-	-	-	-	-
78	41,336	0	1	0	1	1	-	0.00241	-	0.00241	1:41336	100
82	33,748	0	0	0	0	0	-	-	-	-	-	-
83	51,154	0	0	0	0	0	-	-	-	-	-	-
84	6,046	1	0	0	0	0	0.01653	-	-	-	-	-
87	37,153	0	1	1	2	0	-	0.00269	0.00269	0.00538	-	0
全体	737,594	22	19	7	26	7	0.00298	0.00257	0.00094	0.00352	1:105371	26.92
						max	0.05073	0.02942	0.00797	0.02942		100
						min	0.00121	0.00121	0.00121	0.00192		0



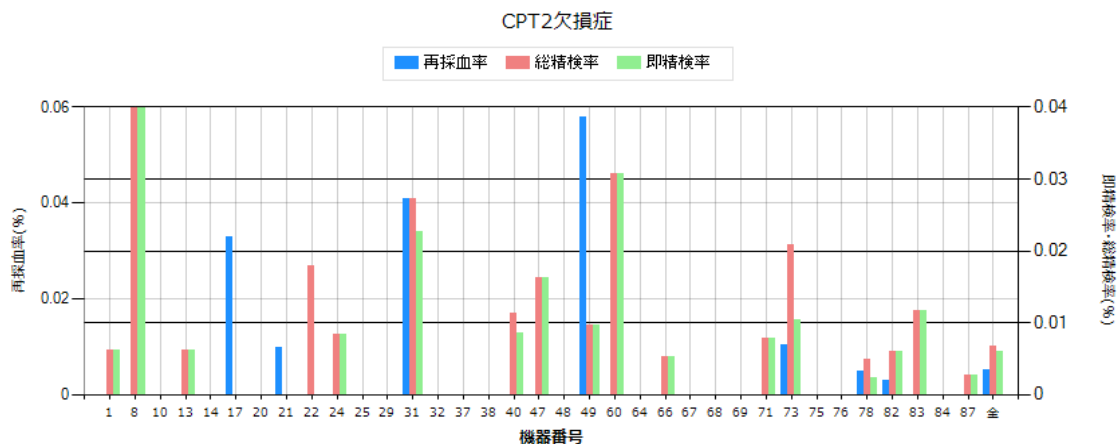
機器No.□	検体数□	再採血数	即精検数	再採血後 精検数	総精検数	発見患者数	再採血率	即精検率	再採血後 精検率	総精検率	発見頻度	陽性適中率 (PPV)
1	48,654	11	1	0	1	-	0.0226	0.00205	-	0.00205	-	-
8	12,546	0	0	0	0	-	-	-	-	-	-	-
10	2,058	0	0	0	0	0	-	-	-	-	-	-
13	82,116	14	2	2	4	2	0.01704	0.00243	0.00243	0.00487	1:41058	50
14	35,828	0	1	0	1	1	-	0.00279	-	0.00279	1:35828	100
17	51,868	18	0	0	0	-	0.0347	-	-	-	-	-
20	10,820	0	0	0	0	0	-	-	-	-	-	-
21	10,195	5	1	0	1	-	0.04904	0.0098	-	0.0098	-	-
22	5,603	0	0	0	0	-	-	-	-	-	-	-
24	60,207	0	14	0	14	-	-	0.02325	-	0.02325	-	-
25	5,852	0	2	0	2	1	-	0.03417	-	0.03417	1:5852	50
29	19,981	0	2	0	2	0	-	0.01	-	0.01	-	0
31	22,048	13	9	0	9	-	0.05896	0.04082	-	0.04082	-	-
32	3,942	0	1	0	1	0	-	0.02536	-	0.02536	-	0
37	6,738	0	7	0	7	0	-	0.10388	-	0.10388	-	0
38	4,606	0	0	0	0	-	-	-	-	-	-	-
40	35,309	6	1	0	1	1	0.01699	0.00283	-	0.00283	1:35309	100
47	6,188	6	1	1	2	2	0.09696	0.01616	0.01616	0.03232	1:3094	100
48	8,017	7	0	0	0	-	0.08731	-	-	-	-	-
49	10,372	0	0	0	0	-	-	-	-	-	-	-
60	9,792	0	1	0	1	0	-	0.01021	-	0.01021	-	0
64	11,599	4	0	0	0	0	0.03448	-	-	-	-	-
66	19,259	0	1	0	1	0	-	0.00519	-	0.00519	-	0
67	7,160	0	1	0	1	-	-	0.01396	-	0.01396	-	-
68	15,492	3	0	0	0	0	0.01936	-	-	-	-	-
69	11,868	0	1	0	1	0	-	0.00842	-	0.00842	-	0
71	12,820	0	3	0	3	-	-	0.0234	-	0.0234	-	-
73	9,643	0	0	0	0	-	-	-	-	-	-	-
75	10,670	0	0	0	0	0	-	-	-	-	-	-
76	16,906	0	1	0	1	0	-	0.00591	-	0.00591	-	0
78	41,336	0	1	0	1	-	-	0.00241	-	0.00241	-	-
82	33,748	9	1	0	1	0	0.02666	0.00296	-	0.00296	-	0
83	51,154	26	0	1	1	1	0.05082	-	0.00195	0.00195	1:51154	100
84	6,046	0	1	0	1	1	-	0.01653	-	0.01653	1:6046	100
87	37,153	0	0	0	0	0	-	-	-	-	-	-
全体	737,594	122	53	4	57	9	0.01654	0.00718	0.00054	0.00772	1:81955	15.79
						max	0.09696	0.10388	0.01616	0.10388		100
						min	0.01699	0.00205	0.00195	0.00195		0



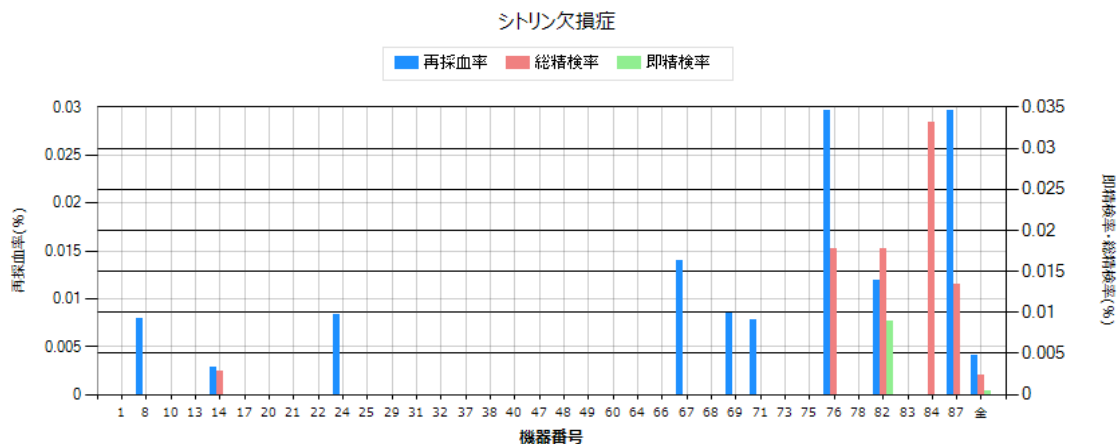
機器No.□	検体数□	再採血数	即精検数	再採血後 精検数	総精検数	発見患者数	再採血率	即精検率	再採血後 精検率	総精検率	発見頻度	陽性適中率 (PPV)
1	48,654	0	0	0	0	0	-	-	-	-	-	-
8	12,546	0	0	0	0	0	-	-	-	-	-	-
10	2,058	0	0	0	0	0	-	-	-	-	-	-
13	82,116	0	0	0	0	0	-	-	-	-	-	-
14	35,828	0	0	0	0	0	-	-	-	-	-	-
17	51,868	1	0	0	0	0	0.00192	-	-	-	-	-
20	10,820	0	0	0	0	0	-	-	-	-	-	-
21	10,195	0	0	0	0	0	-	-	-	-	-	-
22	5,603	0	0	0	0	0	-	-	-	-	-	-
24	60,207	0	7	0	7	0	-	0.01162	-	0.01162	-	-
25	5,852	0	0	0	0	0	-	-	-	-	-	-
29	19,981	0	0	0	0	0	-	-	-	-	-	-
31	22,048	0	0	0	0	0	-	-	-	-	-	-
32	3,942	0	6	0	6	0	-	0.1522	-	0.1522	-	-
37	6,738	0	0	0	0	0	-	-	-	-	-	-
38	4,606	0	0	0	0	0	-	-	-	-	-	-
40	35,309	1	0	0	0	0	0.00283	-	-	-	-	-
47	6,188	0	0	0	0	0	-	-	-	-	-	-
48	8,017	0	0	0	0	0	-	-	-	-	-	-
49	10,372	0	0	0	0	0	-	-	-	-	-	-
60	9,792	0	0	0	0	0	-	-	-	-	-	-
64	11,599	0	0	0	0	0	-	-	-	-	-	-
66	19,259	0	0	0	0	0	-	-	-	-	-	-
67	7,160	0	0	0	0	0	-	-	-	-	-	-
68	15,492	0	0	0	0	0	-	-	-	-	-	-
69	11,868	0	0	0	0	0	-	-	-	-	-	-
71	12,820	0	0	0	0	0	-	-	-	-	-	-
73	9,643	0	0	0	0	0	-	-	-	-	-	-
75	10,670	0	0	0	0	0	-	-	-	-	-	-
76	16,906	0	0	0	0	0	-	-	-	-	-	-
78	41,336	0	0	0	0	0	-	-	-	-	-	-
82	33,748	0	0	0	0	0	-	-	-	-	-	-
83	51,154	0	0	0	0	0	-	-	-	-	-	-
84	6,046	0	0	0	0	0	-	-	-	-	-	-
87	37,153	0	0	0	0	0	-	-	-	-	-	-
全体	737,594	2	13	0	13	0	0.00027	0.00176	0	0.00176	-	0
						max	0.00283	0.1522		0.1522		
						min	0.00192	0.01162		0.01162		



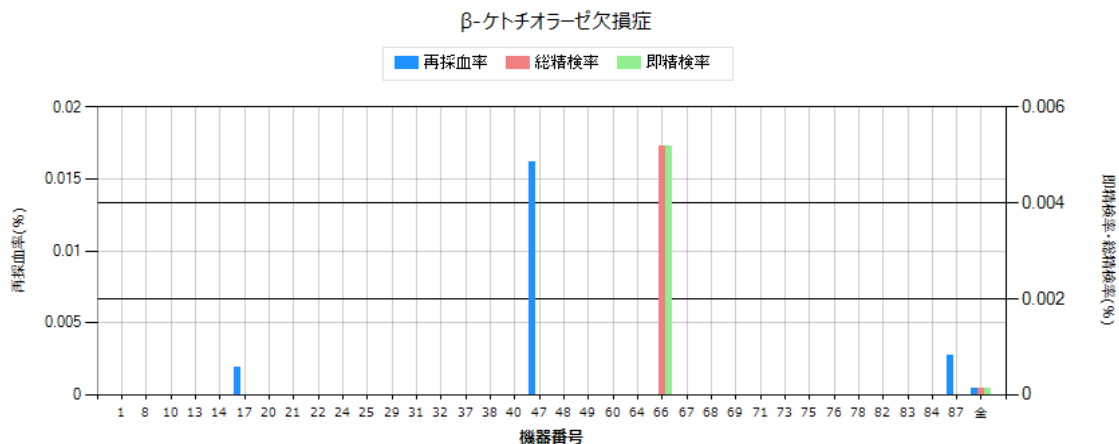
機器No.□	検体数□	再採血数	即精検数	再採血後 精検数	総精検数	発見患者数	再採血率	即精検率	再採血後 精検率	総精検率	発見頻度	陽性適中率 (PPV)
1	48,654	2	0	0	0	0	0.00411	-	-	-	-	-
8	12,546	0	0	0	0	-	-	-	-	-	-	-
10	2,058	0	0	0	0	0	-	-	-	-	-	-
13	82,116	1	0	0	0	-	0.00121	-	-	-	-	-
14	35,828	0	0	0	0	-	-	-	-	-	-	-
17	51,868	0	0	1	1	-	-	0.00192	0.00192	-	-	-
20	10,820	0	0	0	0	0	-	-	-	-	-	-
21	10,195	0	0	1	1	-	-	0.0098	0.0098	-	-	-
22	5,603	0	0	1	1	-	-	0.01784	0.01784	-	-	-
24	60,207	0	0	0	0	-	-	-	-	-	-	-
25	5,852	0	0	0	0	-	-	-	-	-	-	-
29	19,981	0	0	0	0	0	-	-	-	-	-	-
31	22,048	1	0	0	0	-	0.00453	-	-	-	-	-
32	3,942	0	0	0	0	0	-	-	-	-	-	-
37	6,738	1	0	0	0	0	0.01484	-	-	-	-	-
38	4,606	0	0	0	0	-	-	-	-	-	-	-
40	35,309	1	1	3	4	-	0.00283	0.00283	0.00849	0.01132	-	-
47	6,188	0	0	0	0	-	-	-	-	-	-	-
48	8,017	0	0	2	2	-	-	-	0.02494	0.02494	-	-
49	10,372	1	0	1	1	1	0.00964	-	0.00964	0.00964	1:10372	100
60	9,792	0	0	0	0	0	-	-	-	-	-	-
64	11,599	0	0	0	0	0	-	-	-	-	-	-
66	19,259	0	0	0	0	0	-	-	-	-	-	-
67	7,160	0	0	0	0	-	-	-	-	-	-	-
68	15,492	0	0	0	0	0	-	-	-	-	-	-
69	11,868	0	0	0	0	0	-	-	-	-	-	-
71	12,820	0	0	0	0	-	-	-	-	-	-	-
73	9,643	0	0	0	0	-	-	-	-	-	-	-
75	10,670	0	0	0	0	0	-	-	-	-	-	-
76	16,906	2	0	0	0	0	0.01183	-	-	-	-	-
78	41,336	0	0	0	0	-	-	-	-	-	-	-
82	33,748	0	0	1	1	0	-	-	0.00296	0.00296	-	0
83	51,154	2	2	0	2	0	0.0039	0.0039	-	0.0039	-	0
84	6,046	1	0	0	0	0	0.01653	-	-	-	-	-
87	37,153	0	0	0	0	0	-	-	-	-	-	-
全体	737,594	12	3	10	13	1	0.00162	0.0004	0.00135	0.00176	1:737594	7.69
						max	0.01653	0.0039	0.02494	0.02494		100
						min	0.00121	0.00283	0.00192	0.00192		0



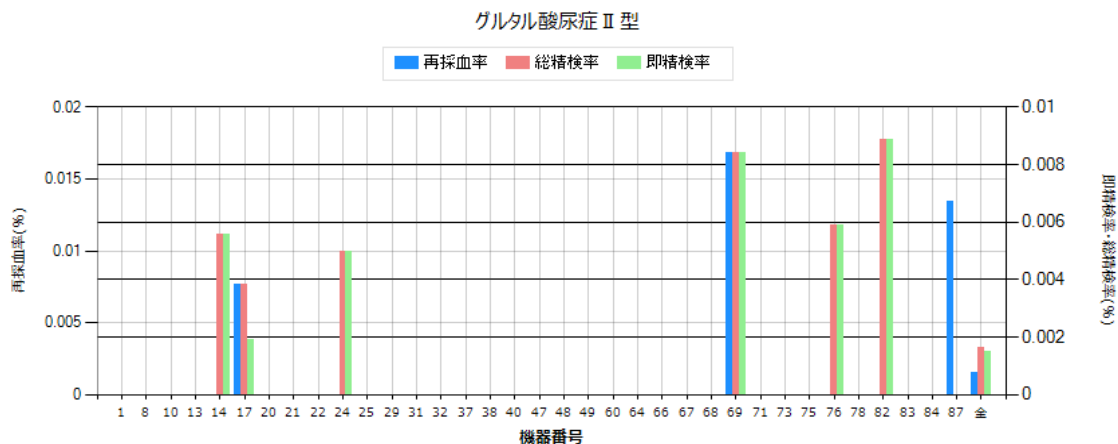
機器No.口	検体数口	再採血数	即精検数	再採血後 精検数	総精検数	発見患者数	再採血率	即精検率	再採血後 精検率	総精検率	発見頻度	陽性適中率 (PPV)
1	48,654	0	3	0	3	0	-	0.00616	-	0.00616	-	0
8	12,546	0	5	0	5	-	-	0.03985	-	0.03985	-	-
10	2,058	0	0	0	0	0	-	-	-	-	-	-
13	82,116	0	5	0	5	-	-	0.00608	-	0.00608	-	-
14	35,828	0	0	0	0	-	-	-	-	-	-	-
17	51,868	17	0	0	0	-	0.03277	-	-	-	-	-
20	10,820	0	0	0	0	0	-	-	-	-	-	-
21	10,195	1	0	0	0	-	0.0098	-	-	-	-	-
22	5,603	0	0	1	1	-	-	0.01784	0.01784	-	-	-
24	60,207	0	5	0	5	-	-	0.0083	-	0.0083	-	-
25	5,852	0	0	0	0	-	-	-	-	-	-	-
29	19,981	0	0	0	0	0	-	-	-	-	-	-
31	22,048	9	5	1	6	-	0.04082	0.02267	0.00453	0.02721	-	-
32	3,942	0	0	0	0	0	-	-	-	-	-	-
37	6,738	0	0	0	0	0	-	-	-	-	-	-
38	4,606	0	0	0	0	-	-	-	-	-	-	-
40	35,309	0	3	1	4	1	-	0.00849	0.00283	0.01132	1:35309	25
47	6,188	0	1	0	1	-	-	0.01616	-	0.01616	-	-
48	8,017	0	0	0	0	-	-	-	-	-	-	-
49	10,372	6	1	0	1	-	0.05784	0.00964	-	0.00964	-	-
60	9,792	0	3	0	3	0	-	0.03063	-	0.03063	-	0
64	11,599	0	0	0	0	0	-	-	-	-	-	-
66	19,259	0	1	0	1	0	-	0.00519	-	0.00519	-	0
67	7,160	0	0	0	0	-	-	-	-	-	-	-
68	15,492	0	0	0	0	0	-	-	-	-	-	-
69	11,868	0	0	0	0	0	-	-	-	-	-	-
71	12,820	0	1	0	1	-	-	0.0078	-	0.0078	-	-
73	9,643	1	1	1	2	0	0.01037	0.01037	0.01037	0.02074	-	0
75	10,670	0	0	0	0	0	-	-	-	-	-	-
76	16,906	0	0	0	0	0	-	-	-	-	-	-
78	41,336	2	1	1	2	-	0.00483	0.00241	0.00241	0.00483	-	-
82	33,748	1	2	0	2	0	0.00296	0.00592	-	0.00592	-	0
83	51,154	0	6	0	6	5	-	0.01172	-	0.01172	1:10231	83.33
84	6,046	0	0	0	0	0	-	-	-	-	-	-
87	37,153	0	1	0	1	0	-	0.00269	-	0.00269	-	0
全体	737,594	37	44	5	49	6	0.00501	0.00596	0.00067	0.00664	1:122932	12.24
						max	0.05784	0.03985	0.01784	0.03985		83.33
						min	0.00296	0.00241	0.00241	0.00269		0



機器No.□	検体数□	再採血数	即精検数	再採血後 精検数	総精検数	発見患者数	再採血率	即精検率	再採血後 精検率	総精検率	発見頻度	陽性適中率 (PPV)
1	48,654	0	0	0	0	-	-	-	-	-	-	-
8	12,546	1	0	0	0	-	0.00797	-	-	-	-	-
10	2,058	0	0	0	0	0	-	-	-	-	-	-
13	82,116	0	0	0	0	-	-	-	-	-	-	-
14	35,828	1	0	1	1	1	0.00279	-	0.00279	0.00279	1:35828	100
17	51,868	0	0	0	0	-	-	-	-	-	-	-
20	10,820	0	0	0	0	0	-	-	-	-	-	-
21	10,195	0	0	0	0	-	-	-	-	-	-	-
22	5,603	0	0	0	0	-	-	-	-	-	-	-
24	60,207	5	0	0	0	-	0.0083	-	-	-	-	-
25	5,852	0	0	0	0	-	-	-	-	-	-	-
29	19,981	0	0	0	0	-	-	-	-	-	-	-
31	22,048	-	0	0	0	-	-	-	-	-	-	-
32	3,942	0	0	0	0	0	-	-	-	-	-	-
37	6,738	0	0	0	0	-	-	-	-	-	-	-
38	4,606	0	0	0	0	-	-	-	-	-	-	-
40	35,309	0	0	0	0	-	-	-	-	-	-	-
47	6,188	0	0	0	0	-	-	-	-	-	-	-
48	8,017	0	0	0	0	-	-	-	-	-	-	-
49	10,372	0	0	0	0	-	-	-	-	-	-	-
60	9,792	0	0	0	0	0	-	-	-	-	-	-
64	11,599	0	0	0	0	-	-	-	-	-	-	-
66	19,259	0	0	0	0	1	-	-	-	-	1:19259	-
67	7,160	1	0	0	0	-	0.01396	-	-	-	-	-
68	15,492	0	0	0	0	-	-	-	-	-	-	-
69	11,868	1	0	0	0	0	0.00842	-	-	-	-	-
71	12,820	1	0	0	0	-	0.0078	-	-	-	-	-
73	9,643	0	0	0	0	-	-	-	-	-	-	-
75	10,670	0	0	0	0	0	-	-	-	-	-	-
76	16,906	5	0	3	3	2	0.02957	-	0.01774	0.01774	1:8453	66.67
78	41,336	0	0	0	0	-	-	-	-	-	-	-
82	33,748	4	3	3	6	3	0.01185	0.00888	0.00888	0.01777	1:11249	50
83	51,154	-	-	-	0	-	-	-	-	-	0	-
84	6,046	0	0	2	2	1	-	-	0.03307	0.03307	1:6046	50
87	37,153	11	0	5	5	0	0.0296	-	0.01345	0.01345	-	0
全体	737,594	30	3	14	17	8	0.00406	0.0004	0.00189	0.0023	1:92199	47.06
						max	0.0296	0.00888	0.03307	0.03307		100
						min	0.00279	0.00888	0.00279	0		0

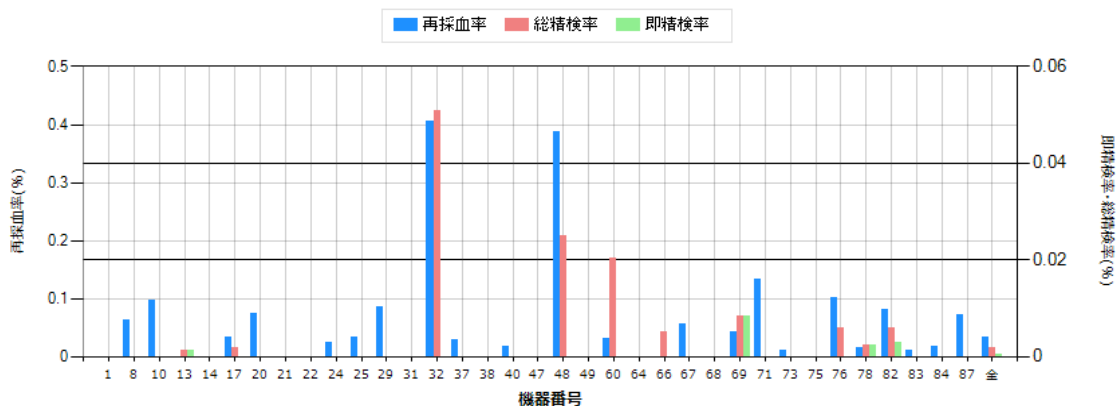


機器No.□	検体数□	再採血数	即精検数	再採血後精検数	総精検数	発見患者数	再採血率	即精検率	再採血後精検率	総精検率	発見頻度	陽性適中率 (PPV)
1	48,654	0	0	0	0	-	-	-	-	-	-	-
8	12,546	0	0	0	0	-	-	-	-	-	-	-
10	2,058	0	0	0	0	0	-	-	-	-	-	-
13	82,116	0	0	0	0	-	-	-	-	-	-	-
14	35,828	0	0	0	0	-	-	-	-	-	-	-
17	51,868	1	0	0	0	-	0.00192	-	-	-	-	-
20	10,820	0	0	0	0	0	-	-	-	-	-	-
21	10,195	0	0	0	0	-	-	-	-	-	-	-
22	5,603	0	0	0	0	-	-	-	-	-	-	-
24	60,207	0	0	0	0	-	-	-	-	-	-	-
25	5,852	0	0	0	0	-	-	-	-	-	-	-
29	19,981	0	0	0	0	-	-	-	-	-	-	-
31	22,048	-	0	0	0	-	-	-	-	-	-	-
32	3,942	0	0	0	0	0	-	-	-	-	-	-
37	6,738	0	0	0	0	-	-	-	-	-	-	-
38	4,606	0	0	0	0	-	-	-	-	-	-	-
40	35,309	0	0	0	0	-	-	-	-	-	-	-
47	6,188	1	0	0	0	-	0.01616	-	-	-	-	-
48	8,017	0	0	0	0	-	-	-	-	-	-	-
49	10,372	0	0	0	0	-	-	-	-	-	-	-
60	9,792	0	0	0	0	0	-	-	-	-	-	-
64	11,599	0	0	0	0	-	-	-	-	-	-	-
66	19,259	0	1	0	1	0	-	0.00519	-	0.00519	-	0
67	7,160	0	0	0	0	-	-	-	-	-	-	-
68	15,492	0	0	0	0	-	-	-	-	-	-	-
69	11,868	0	0	0	0	0	-	-	-	-	-	-
71	12,820	0	0	0	0	-	-	-	-	-	-	-
73	9,643	0	0	0	0	-	-	-	-	-	-	-
75	10,670	0	0	0	0	0	-	-	-	-	-	-
76	16,906	-	-	-	0	-	-	-	-	0	-	-
78	41,336	0	0	0	0	-	-	-	-	-	-	-
82	33,748	0	0	0	0	0	-	-	-	-	-	-
83	51,154	-	-	-	0	-	-	-	-	0	-	-
84	6,046	0	0	0	0	0	-	-	-	-	-	-
87	37,153	1	0	0	0	0	0.00269	-	-	-	-	-
全体	737,594	3	1	0	1	0	0.0004	0.00013	0	0.00013	-	0
						max	0.01616	0.00519		0.00519		0
						min	0.00192	0.00519		0		0



機器No.□	検体数□	再採血数	即精検数	再採血後 精検数	総精検数	発見患者数	再採血率	即精検率	再採血後 精検率	総精検率	発見頻度	陽性適中率 (PPV)
1	48,654	0	0	0	0	-	-	-	-	-	-	-
8	12,546	0	0	0	0	-	-	-	-	-	-	-
10	2,058	0	0	0	0	0	-	-	-	-	-	-
13	82,116	0	0	0	0	-	-	-	-	-	-	-
14	35,828	0	2	0	2	-	-	0.00558	-	0.00558	-	-
17	51,868	4	1	1	2	-	0.00771	0.00192	0.00192	0.00385	-	-
20	10,820	0	0	0	0	0	-	-	-	-	-	-
21	10,195	0	0	0	0	-	-	-	-	-	-	-
22	5,603	0	0	0	0	-	-	-	-	-	-	-
24	60,207	0	3	0	3	-	-	0.00498	-	0.00498	-	-
25	5,852	0	0	0	0	-	-	-	-	-	-	-
29	19,981	0	0	0	0	-	-	-	-	-	-	-
31	22,048	-	0	0	0	-	-	-	-	-	-	-
32	3,942	0	0	0	0	0	-	-	-	-	-	-
37	6,738	0	0	0	0	-	-	-	-	-	-	-
38	4,606	0	0	0	0	-	-	-	-	-	-	-
40	35,309	0	0	0	0	-	-	-	-	-	-	-
47	6,188	0	0	0	0	-	-	-	-	-	-	-
48	8,017	0	0	0	0	-	-	-	-	-	-	-
49	10,372	0	0	0	0	-	-	-	-	-	-	-
60	9,792	0	0	0	0	0	-	-	-	-	-	-
64	11,599	0	0	0	0	-	-	-	-	-	-	-
66	19,259	0	0	0	0	0	-	-	-	-	-	-
67	7,160	0	0	0	0	-	-	-	-	-	-	-
68	15,492	0	0	0	0	-	-	-	-	-	-	-
69	11,868	2	1	0	1	1	0.01685	0.00842	-	0.00842	1:11868	100
71	12,820	0	0	0	0	-	-	-	-	-	-	-
73	9,643	0	0	0	0	-	-	-	-	-	-	-
75	10,670	0	0	0	0	0	-	-	-	-	-	-
76	16,906	0	1	0	1	0	-	0.00591	-	0.00591	-	0
78	41,336	0	0	0	0	-	-	-	-	-	-	-
82	33,748	0	3	0	3	1	-	0.00888	-	0.00888	1:33748	33.33
83	51,154	-	-	-	0	-	-	-	-	0	-	-
84	6,046	0	0	0	0	0	-	-	-	-	-	-
87	37,153	5	0	0	0	0	0.01345	-	-	-	-	-
全体	737,594	11	11	1	12	2	0.00149	0.00149	0.00013	0.00162	1:368797	16.67
						max	0.01685	0.00888	0.00192	0.00888		100
						min	0.00771	0.00192	0.00192	0		0

カルニチントランスポーター異常症（全身性カルニチン欠乏症）



機器No.□	検体数□	再採血数	即精検数	再採血後 精検数	総精検数	発見患者数	再採血率	即精検率	再採血後 精検率	総精検率	発見頻度	陽性適中率 (PPV)
1	48,654	0	0	0	0	-	-	-	-	-	-	-
8	12,546	8	0	0	0	-	0.06376	-	-	-	-	-
10	2,058	2	0	0	0	0	0.09718	-	-	-	-	-
13	82,116	0	1	0	1	-	-	0.00121	-	0.00121	-	-
14	35,828	0	0	0	0	-	-	-	-	-	-	-
17	51,868	17	0	1	1	-	0.03277	-	0.00192	0.00192	-	-
20	10,820	8	0	0	0	0	0.07393	-	-	-	-	-
21	10,195	0	0	0	0	-	-	-	-	-	-	-
22	5,603	0	0	0	0	-	-	-	-	-	-	-
24	60,207	15	0	0	0	-	0.02491	-	-	-	-	-
25	5,852	2	0	0	0	-	0.03417	-	-	-	-	-
29	19,981	17	0	0	0	0	0.08508	-	-	-	-	-
31	22,048	-	0	0	0	-	-	-	-	-	-	-
32	3,942	16	0	2	2	0	0.40588	-	0.05073	0.05073	-	0
37	6,738	2	0	0	0	0	0.02968	-	-	-	-	-
38	4,606	0	0	0	0	-	-	-	-	-	-	-
40	35,309	6	0	0	0	-	0.01699	-	-	-	-	-
47	6,188	0	0	0	0	-	-	-	-	-	-	-
48	8,017	31	0	2	2	-	0.38667	-	0.02494	0.02494	-	-
49	10,372	0	0	0	0	-	-	-	-	-	-	-
60	9,792	3	0	2	2	0	0.03063	-	0.02042	0.02042	-	0
64	11,599	0	0	0	0	-	-	-	-	-	-	-
66	19,259	0	0	1	1	0	-	-	0.00519	0.00519	-	0
67	7,160	4	0	0	0	-	0.05586	-	-	-	-	-
68	15,492	0	0	0	0	-	-	-	-	-	-	-
69	11,868	5	1	0	1	0	0.04213	0.00842	-	0.00842	-	0
71	12,820	17	0	0	0	-	0.1326	-	-	-	-	-
73	9,643	1	0	0	0	-	0.01037	-	-	-	-	-
75	10,670	0	0	0	0	0	-	-	-	-	-	-
76	16,906	17	0	1	1	0	0.10055	-	0.00591	0.00591	-	0
78	41,336	6	1	0	1	-	0.01451	0.00241	-	0.00241	-	-
82	33,748	27	1	1	2	0	0.08	0.00296	0.00296	0.00592	-	0
83	51,154	6	0	0	0	0	0.01172	-	-	-	-	-
84	6,046	1	0	0	0	0	0.01653	-	-	-	-	-
87	37,153	27	0	0	0	0	0.07267	-	-	-	-	-
全体	737,594	238	4	10	14	0	0.03226	0.00054	0.00135	0.00189	-	0
						max	0.40588	0.00842	0.05073	0.05073		0
						min	0.01037	0.00121	0.00192	0.00121		0